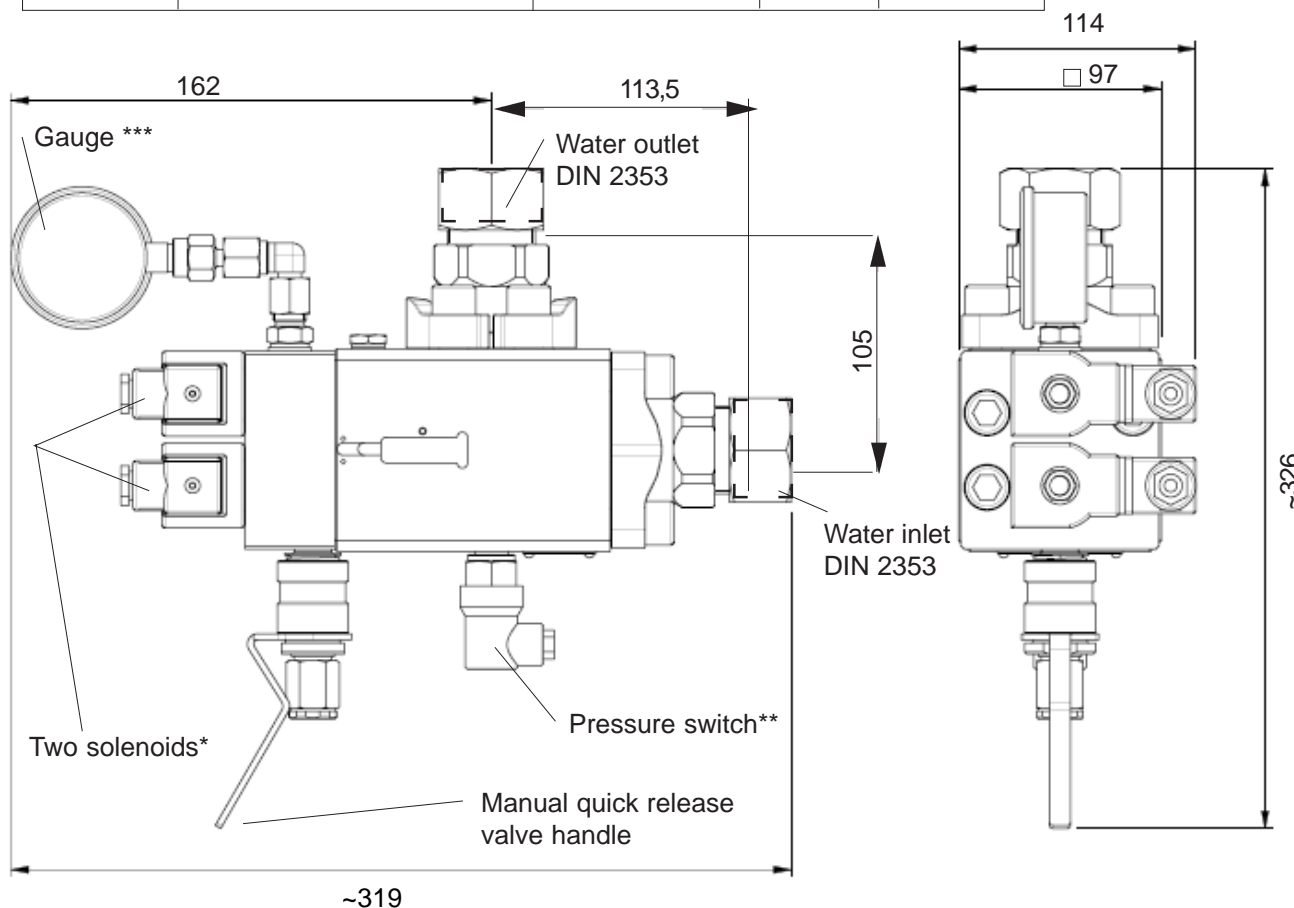


Dual Solenoid Valve NS 40

Product D01072

16 Dec 2008

Product	Valve type	Solenoid voltage	Water pipe O.D. [mm]	
			Inlet	Outlet
D01072	SVQ 40-A3P-S30/30-10-M	24 VDC	30,0	30,0



- *) Solenoid type 71216J21BL00-NO-D300C2 24 VDC
- ***) Pressure switch type PMM 80AINT R18T50 APPTG
- ***) Gauge type 213.53.63.250B/P

Description:

Solenoid valve is used to control the spray head system activation. In the case of fire, the solenoid valve is opened by the remote operated solenoid(s) or by lifting the manual quick release handle.

In order to open the solenoid valve, either the solenoid(s) or the manual quick release valve can be used. Once released, the machinery space valve is latched open. To close the solenoid valve, it is essential to ensure that both the solenoids and the manual quick release valve are closed as they operate the solenoid valve independently. The manual quick release valve will only reset to closed position when the water pressure in the machinery valve decreases to 0 (no pressure). After closing the solenoid space valve, a small leakage may occur as the pressure is stabilizing.

General	Body material	Brass
	Connections	Cutting ring DIN2353
	Valve function	Normally closed, with manual release valve
	Mass (both versions)	15,0 kg
	Max. pressure	200 bar